

State of Wyoming Corner Record

(In compliance with the *CORNER PERPETUATION AND FILING ACT*, Wyoming Statutes, 1997 Section 33-29-140 et. seq., and the Rules and Regulations of the Board of Professional Engineers and Professional Land Surveyors)

Reverse side of this form may be used if more space is needed.

Record of original survey and citation of source of historical information (if corner is lost or obliterated). Description of corner monumentation evidence found and/or monument and accessories established to perpetuate the location of this corner. Sketch of relative location of monument, accessories, and reference points with course and distance to adjacent corner(s) (if determined in this survey). Method and rationale for reestablishment of lost or obliterated corner.

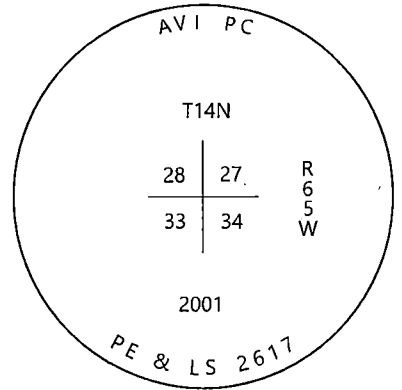
LOCATION: Northeast Corner of Section 33, T14N, R65W, 6th Principal Meridian, Laramie County.

RECORD: GLO - Set granite boulder 15" x 14" x 8"

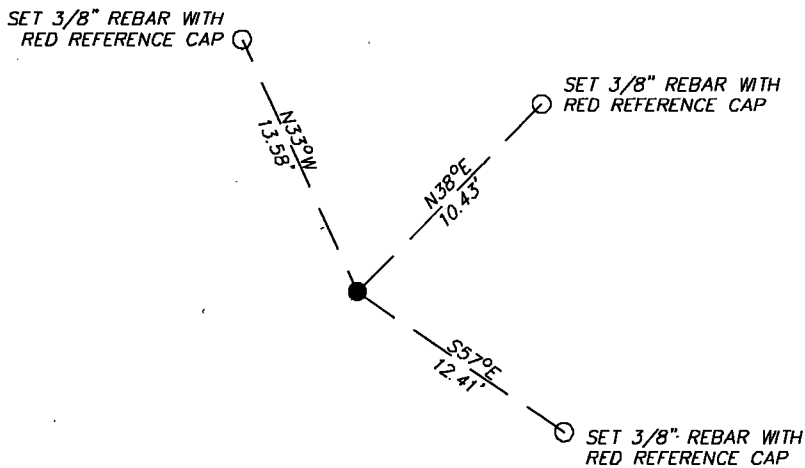
2001 - James Voeller was unable to find the original corner. He set a 3.25" aluminum cap stamped LS 2617 on a 5/8" rebar in a collar of stones. It was set by double proportion. Notes a distance of 5294.67' to the NW 27-T14N-R65W, 5254.53' to the SE 27-T14N-R65W, 5294.78' to SW 34-T14N-R65W, and 2632.87' to NQ 33-T14N-R65W.

RECOVERED: 2019 - Westwood Professional Services found a 3.25" aluminum cap stamped LS 2617 in a mound of stones as noted in 2001 survey.

RESET: Accepting location of the monument as the corner location. Set ties as shown.



Monument Inscription



Date of Field Work: 10/12/2019

Office Reference: 22237.02

Cross Index Plat

	1	2	3	4	5	6	7	8	9	10	11	12	13	14	15	16	17	18	19	20	21	22	23	24	25		
A																											A
B																											B
C		6																									C
D																											D
E																											E
F																											F
G																											G
H																											H
J																											J
K																											K
L																											L
M																											M
N																											N
O																											O
P																											P
Q																											Q
R																											R
S																											S
T																											T
U																											U
V																											V
W																											W
X																											X
Y																											Y
Z																											Z
	1	2	3	4	5	6	7	8	9	10	11	12	13	14	15	16	17	18	19	20	21	22	23	24	25		

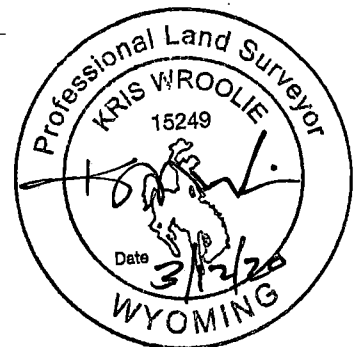
Firm/Agency, Address

Westwood Professional Services
 3701 12th St. N. Ste. 206
 St. Cloud, MN 56303

This corner record was prepared by me or under my direction and supervision.

SEAL & SIGNATURE

Telephone Number: (320)-253-9495



RECP #: 775850
RECORDED 4/15/2020 AT 10:17 AM BK# 2668 PG# 282
 Debra K. Lee, CLERK OF LARAMIE COUNTY, WY PAGE 1 OF 1

Corner Name Northeast Corner Section 33, T 14 N, R 65 W, 6th P.M.

Cross-Index No.: V-13

County: Laramie Wyoming

SBRPEPLS/PLSW: March 1994; PLSW January 1998